

SIMULATION OF LINAC OPERATION USING THE TRACKING CODE L

M. Drevlak^{*1}, M. Timm⁺, T. Weiland⁺

^{*}DESY, Notkestr. 85, 22607 Hamburg, Germany

⁺Technical University of Darmstadt, FB 18, Schlossgartenstr. 8, 64289 Darmstadt, Germany

Abstract

In linear accelerators, misalignments of the machine elements can cause considerable emittance growth due to wake fields, dispersion and other effects. Hence, tight limits are imposed on machine tolerances, design parameters and methods of machine operation. In order to simulate the beam dynamics in linacs, the tracking code L has been developed. Including both single- and multi-bunch effects, the behaviour of the beam in the machine can be simulated and adjustments on parameters of the machine elements up to complete correction techniques and operation procedures can be applied. Utilization of the program is facilitated by a graphical user interface. In this paper we will give an overview over the capabilities of this code and demonstrate its efficiency at attacking the problems associated with large linear accelerators.

Introduction

The tracking code L is embedded in the MAFIA software package. It is equipped with a graphical user interface (GUI), guiding the user through the simulation procedure. Figure 2 e.g. shows the dialogue for a quadrupole creation.

L is able to compute single and multibunch behaviour inside the accelerating structure. The single bunch case covers the development of the emittance, energy spread and the optical functions due to the influence of short range wake fields and structure misalignment.

The effects relevant for a multibunch simulation are:

- beam loading
- long range wake fields
- charge fluctuation
- RF fieldkicks from tilted accelerating structures
- RF phase errors
- longitudinal jitter of the bunch position

The power of a new software is best demonstrated discussing an example. We will perform a tracking calculation in the first sector of the S-band linear collider (SBLC). This sector consists of 48 FODO cells. Each of them bears two accelerating structures of 180 cavities (total length 6m), one focusing and one defocusing quadrupole magnet with an focal length of 4.3 meter. Another quadrupole with the double focal length is located at the beginning of the structure establishing $\alpha=0$. Therefore the total length of sector 1 is 600 meter. In our example we will consider single bunch dynamics.

The principal simulation procedure is shown in Figure 1. We will follow this concept during this paper.

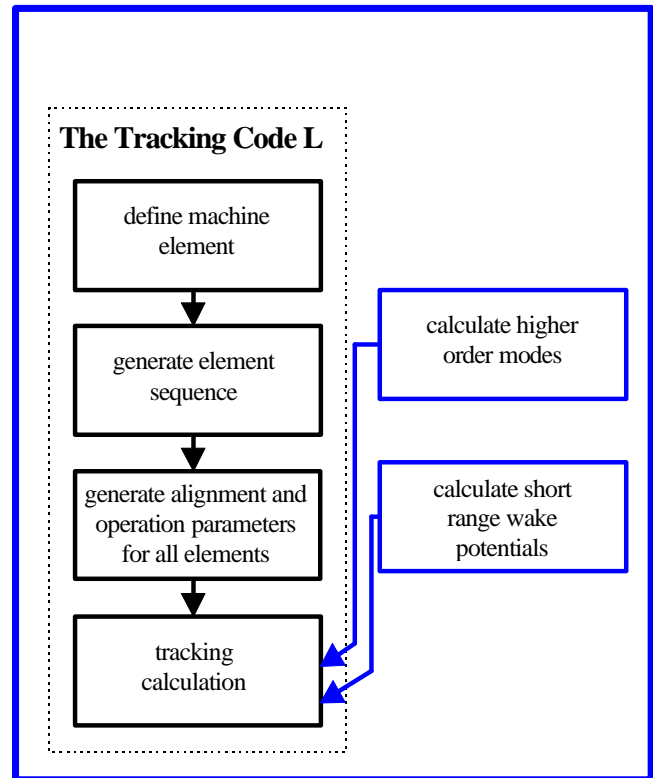


Figure 1 The tracking code L is embedded in the MAFIA software system. Flux diagram of the tracking procedure

Creating the elements

In the L-code no field problem on a discretised space is solved, but a sequence of transfer matrices belonging to the elements appearing inside a linear accelerator is defined[1]. Implemented elements are:

- drift spaces
- quadrupoles
- accelerating structures
- elements with arbitrary transfer matrices

To each element a beam position monitor and a dipole magnet can be added. This feature is important for the application of correction techniques.

The following insufficiencies can be attached to the elements:

- systematic misalignment and tilts in the transverse directions
- accidental misalignments and tilts by a root-mean-square-value
- sag of a structure element

¹ Now at the Max-Planck-Institut for Plasma Physics, Koitenhaeager Landstrasse, 17489 Greifswald, Germany

Since no drift spaces appear in our example, we will start our input with the quadrupoles(Figure 2). The parameters required are the physical length and the focal length in meter. Finishing our input we add the new quadrupole to the list of existing quadrupoles.

At every time it is possible to display the parameters of previous structure elements using the show button, change parameters with the replace button or remove an unused element by pressing the delete button.

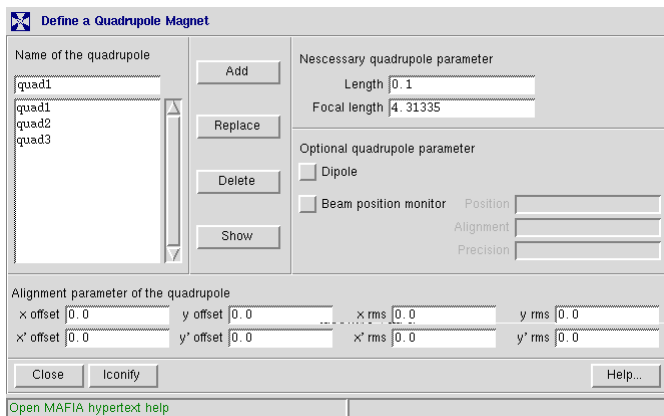


Figure 2 The dialogue for quadrupole creation. The necessary settings like length and focal length are separated from the optional (dipole or BPM), and the description of tilts and misalignments.

We will continue in our problem description by defining the accelerating structures. The geometrical dimensions were already mentioned in the introduction. Furthermore the qualityfactor ($Q=13500$), the frequency ($f=2.998$ GHz), the loss parameter ($k_0 = 1.11 \cdot 10^{14}$ V/As) have to be defined. Depending on whether single or multibunch dynamics are to be calculated, the short or the long range wakefields respectively have the main influence on the result of the calculation. We will restrict ourselves to the investigation of the single bunch behaviour. Consequently we need the short range wake information[4].

The bunchlength in the SBLC collider is $\sigma=300\mu\text{m}$. The wakefield calculation takes place in the MAFIA-T2-module. The longitudinal wakepotential in a range of 13σ from the bunch head is needed. L is able to consider monopole, dipole and quadrupole wakes. The transverse wake potential is calculated by means of the Panofsky-Wenzel-theorem.

In a multibunch calculation the frequencies of the modes in the several passbands must be supplied.

Building the machine

After having defined every single element of the machine is, we continue with glueing the primitives together to a more complex structure, a so called module. In our example we take 2 accelerating structures and as well a focusing as a defocusing quadrupole and put them together in a FODO-cell.

It is possible to combine previously build modules with other elements, each of them with an arbitrary number of

repetitions. In this facil manner we can construct sector 1 of the SBLC from the 193 elements within one minute.

After the modules are expanded into a structure, the misalignments to elements and classes are set by means of a random generator. Furthermore L offers the application of the slow ATL-ground motion to the final lattice.

Even in this state every single setting is accessible via the graphical user interface.

Defining the bunch

Every particle inside the bunch ($1.1 \cdot 10^{10}$ particles in case of the SBLC) has different initial offsets (x, y), slopes (x', y'), energies (W), and longitudinal positions (s). In order to model the bunch with a moderate numerical effort, it is divided into several slices, distributed equidistantly over its range. Assuming no uncorrelated energy spread each particle inside one slice has the same energy. L offers the feature to include the uncorrelated energy spread by defining subslices inside one slice.

To analyze the multibunch dynamics it is often sufficient to assume the single bunches inside the bunchtrain to be pointlike charges. Nevertheless it is possible to divide every bunch into slices and to examine the combined single and multibunch effects.

Performing the calculation

The next step is starting the calculation. After 2 minutes calculation time the results of the first shot through the machine are available, such as the emittance(see Figure 3), the energy distribution (Figure 4), the phase space ellipse (Figure 5) or the trajectory of the bunch Figure 6).

The L-code calculates the beam dynamics in both transverse directions in one run. Furthermore it provides the possibility to switch single effects (e. g. all longitudinal wake

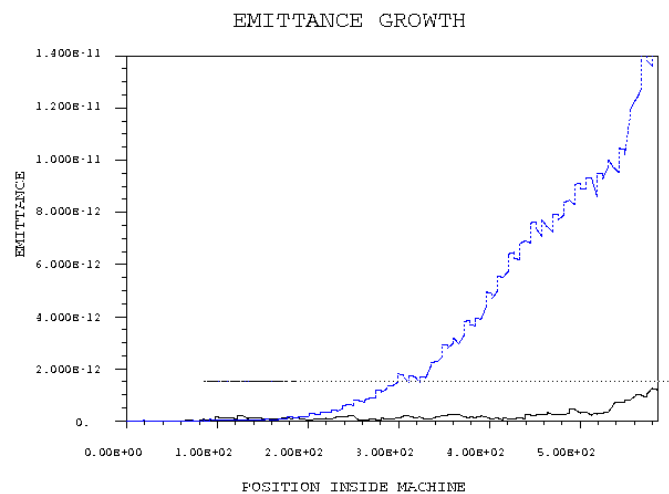


Figure 3 The emittance growth in the transverse x direction (solid line) and the y-direction dashed line along the machine due to wakefields and misalignment.

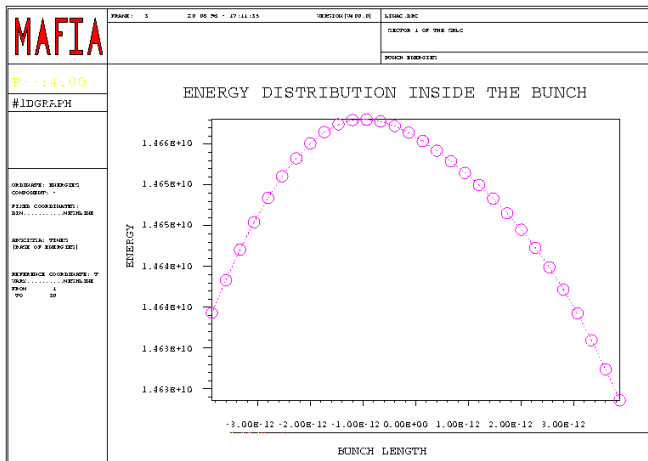


Figure 4 The energy distribution inside the bunch. Every point marks one slice of the bunch.

fields or only dipole wakes) on or off right before the tracking calculation commences.

Correction Techniques

The code is intended not only for static analysis of emittance growth in a linac but rather for the simulation of complete linac operation. Therefore several features have been added allowing to simulate both perturbing effects occurring at machine operation and the application of advanced trajectory and emittance correction techniques. The effects perturbing machine operation include for instance random fluctuations of the bunch charge, jitter of the bunch positions or slow displacement of machine elements due to inelastic ground motion [3]. On the other hand, machine elements can be equipped with beam position monitors simulating the measurement of the transverse beam offset relative to the elements and with dipole magnets deflecting the beam. Thus the user can create his own correction procedure in the MAFIA command language, reading the beam positions or emittance profile obtained in the tracking calculation and then correct the beam emittance by adjusting any machine parameter (element displacements, deflection angles of dipole magnets ...) This feature has been applied successfully to a variety of correction techniques like Dispersion-Free and Wake-Free orbit correction, trajectory bumps and others.

Conclusion

The tracking code L is a powerful tool to investigate both, the single and the multibunch behaviour inside a linear accelerator. Beyond that it is able to simulate the effects of different correction schemes. The graphical user interface will guide you securely through this matter.

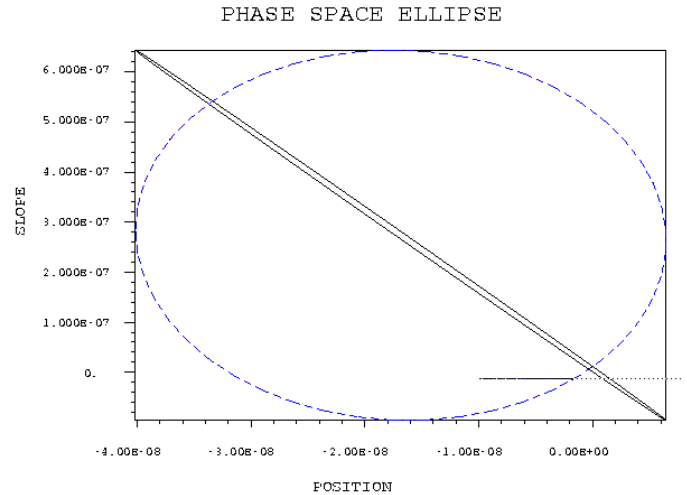


Figure 5 Plot of the phase space ellipses. The solid line shows the transverse x direction the dashed line the y-direction

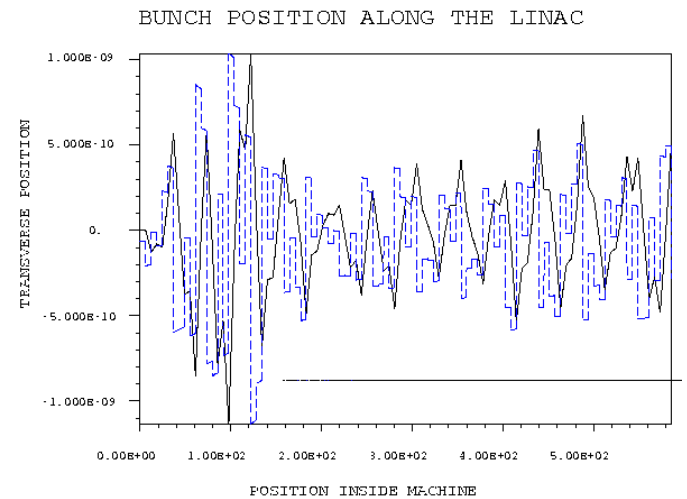


Figure 6 Plot of the transverse position (solid line and scale) and slope (dashed line) of the particles along the machine.

References

- [1] M. Drevlak, "On the Preservation of Single- and Multi-Bunch Emittance in Linear Accelerators", DESY 95-225, (1995)
- [2] "International Linear Collider Technical Review Report 1995" SLAC-R-95-471, (1995)
- [3] B. A. Balakov et al.: "Investigation of Seismic Vibrations and Relative Displacements of Linear Collider VLEPP Elements", Proc. 1991 IEEE Part. Acc. Conf., San Francisco, USA, pp3273,1991
- [4] T. Weiland, "On the Numerical Solution of Maxwell's Equations and Applications in the Field of Accelerator Physics", Particle Accelerators, 1985, Vol. 17, p 227-242